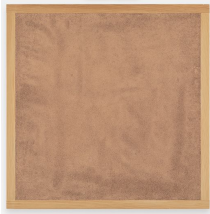


**MARCIA HAFIF REMEMBERED**  
**September 27 - October 27, 2018**  
**Checklist**

**GROUND FLOOR, clockwise from left:**



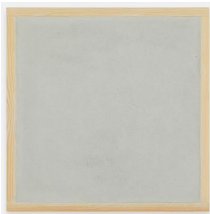
*Mass Tone Painting: English Red, March 5, 1974, 1974*  
 Oil on canvas  
 78 x 84 inches  
 (198.1 x 213.4 cm)  
 HAF-0030



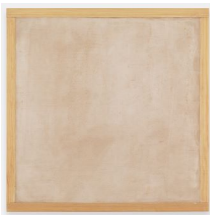
*Marble Dust Paintings: Prugna, 1994*  
 Marble dust on pine  
 17 3/4 x 17 3/4 inches  
 (45.1 x 45.1 cm)  
 HAF-0274



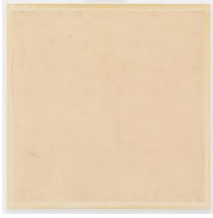
*Marble Dust Study: Coral Pink, 1994*  
 Marble dust on pine  
 13 x 13 inches  
 (33 x 33 cm)  
 HAF-0281



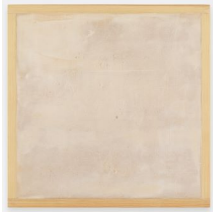
*Marble Dust Study: Alp Green, 1994*  
 Marble dust on pine  
 13 x 13 inches  
 (33 x 33 cm)  
 HAF-0278



*Plaster Study: Thistle Finish with Marble Dust, 1994*  
 Plaster on pine  
 13 x 13 inches  
 (33 x 33 cm)  
 HAF-0284



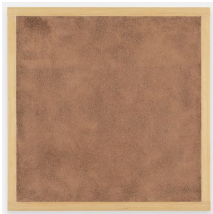
*Marble Dust Paintings: San Ambrogio, 1994*  
Marble dust on pine  
23 1/2 x 23 1/2 inches  
(59.7 x 59.7 cm)  
HAF-0276



*Plaster Study: Thistle Finish, 1994*  
Plaster on pine  
13 x 13 inches  
(33 x 33 cm)  
HAF-0282



*Plaster Study: Thistle Multi Finish, 1994*  
Plaster on pine  
13 x 13 inches  
(33 x 33 cm)  
HAF-0283



*Marble Dust Study: Prugna, 1994*  
Marble dust on pine  
13 x 13 inches  
(33 x 33 cm)  
HAF-0279



*Marble Dust Paintings: Alp Green, 1994*  
Marble dust on pine  
23 1/2 x 23 1/2 inches  
(59.7 x 59.7 cm)  
HAF-0277



*Marble Dust Study: San Ambrogio, 1994*  
Marble dust on pine  
13 x 13 inches  
(33 x 33 cm)  
HAF-0280



*Marble Dust Paintings: Coral Pink, 1994*  
Marble dust on pine  
17 3/4 x 17 3/4 inches  
(45.1 x 45.1 cm)  
HAF-0275



*Table of Pigments, 1991*  
Oil on canvas  
24 parts, each:  
22 x 22 inches  
(55.9 x 55.9 cm)  
HAF-0217--HAF-0240

**From left to right:**

**Top:** Zinc Oxide; Raw Sienna; Burnt Umber;  
Naples Yellow Medium; Strontium Yellow;  
Vermilion; Red Ochre; Permanent Green

**Center:** Cobalt Violet; Mars Violet;  
Manganese Violet; Ultramarine Green;  
Cadmium Yellow Light; Cadmium Yellow  
Medium; Rosa Quindo; Burnt Sienna

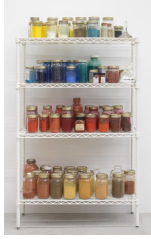
**Bottom:** Phthalocyanine Blue; Raw Umber;  
Cobalt Violet; Chrome Oxide Opaque; Burnt  
Green Earth; Transparent Golden Ochre;  
Pozzuoli Red, Massicot



*Shade Paintings: Group 12 (Scheveningen  
Blue, Silver, Flesh Tint, Indigo), 2015*  
Acrylic on canvas  
4 parts, each:  
22 x 22 inches  
(55.9 x 55.9 cm)  
HAF-0285



*Mass Tone Painting: White Lead, July 1973,  
1973*  
Oil on canvas  
28 x 22 inches  
(71.1 x 55.9 cm)  
HAF-0023



*Studio Pigments and Shelf, n.d.*

Pigments, jars, and shelf

Overall dimensions:

60 x 35 1/2 x 14 inches

(152.4 x 90.2 x 35.6 cm)

HAF-0286



*Mass Tone Painting: Burnt Sienna, Spring*

1973, 1973

Oil on canvas

28 x 22 inches

(71.1 x 55.9 cm)

HAF-0024



*Mass Tone Painting: English Red, Spring*

1973, 1973

Oil on canvas

28 x 22 inches

(71.1 x 55.9 cm)

HAF-0025

**SECOND FLOOR, clockwise from left:**



*Black Painting: Ultramarine Blue, Burnt*

Umber IV, 1980

Oil on canvas

84 x 78 inches

(213.4 x 198.1 cm)

HAF-0215



*Black Painting: Ultramarine Blue, Burnt*

Umber VII, 1980

Oil on canvas

84 x 78 inches

(213.4 x 198.1 cm)

HAF-0216



*Black Painting: Ultramarine Blue, Burnt  
Umber I, 1979*

Oil on canvas

84 x 78 inches

(213.4 x 198.1 cm)

HAF-0213



*Black Painting: Ultramarine Blue, Burnt  
Umber II, 1979*

Oil on canvas

84 x 78 inches

(213.4 x 198.1 cm)

HAF-0214