

TATSUO IKEDA
September 7 - October 14, 2017



The Eye(s) Inside the Mouth, 1956
Ink, watercolor, oil and crayon on paper
14 1/2 x 11 3/8 inches
(37 x 28.8 cm)
IKE-0071



LOVE, 1955
Ink on paper
11 3/8 x 14 3/4 inches
(29 x 37.5 cm)
IKE-0032

The George Economou Collection



Untitled, 1958
Watercolor and ink on paper
15 1/2 x 12 inches
(39.5 x 30.5 cm)
IKE-0076



Untitled, 1957
Ink and watercolor on paper
14 3/8 x 10 1/4 inches
(36.4 x 26.2 cm)
IKE-0042



Town Series, 1959
Ink and Conté on paper
11 3/8 x 14 3/4 inches
(29 x 37.3 cm)
IKE-0010

The George Economou Collection



Untitled, 1959
Conté and pastel on paper
11 3/8 x 14 3/4 inches
(28.8 x 37.5 cm)
IKE-0003



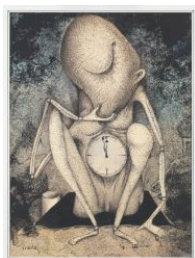
*Birds and Beasts Chronicle, an Extra Edition:
Mask Bird, 1958-2008*
Pen, Conté and watercolor on paper
15 1/8 x 10 1/4 inches
(38.5 x 26 cm)
IKE-0039



Singleton, ca. 1958
Pen, Conté and watercolor on paper
14 5/8 x 10 5/8 inches
(37 x 27 cm)
IKE-0033
The George Economou Collection



*Birds and Beasts Chronicle, an Extra Edition:
Move Forward!, 1958-2008*
Pen, Conté and watercolor on paper
14 3/8 x 11 inches
(36.6 x 28 cm)
IKE-0038
The George Economou Collection



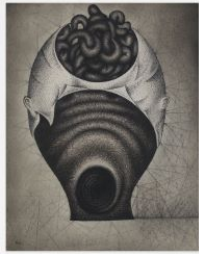
Starving Comedian, 1960-2008
Pen, Conté and watercolor on paper
14 7/8 x 11 inches
(37.7 x 27.8 cm)
IKE-0040
The George Economou Collection



Hundred Masks, an Extra Edition, 1961-2008
Pen, Conté and watercolor on paper
13 7/8 x 9 5/8 inches
(35.2 x 24.3 cm)
IKE-0037
The George Economou Collection



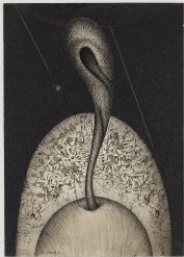
Oval Space, 1964
Conté and watercolor on paper
10 1/2 x 14 7/8 inches
(26.6 x 37.8 cm)
IKE-0034



Untitled, 1963
Conté and pen on paper
15 3/8 x 12 inches
(39 x 30.5 cm)
IKE-0074



Hundred Masks, an Extra Edition: Peep, 1960-2008
Pen, Conté and watercolor on paper
14 x 9 5/8 inches
(35.7 x 24.5 cm)
IKE-0036



Oval Space 1, 1964
Ink, oil paint and watercolor on paper
14 7/8 x 10 1/2 inches
(37.8 x 26.8 cm)
IKE-0024



Toy World, 1967
Watercolor and ink on paper
15 3/4 x 12 1/2 inches
(39.9 x 31.9 cm)
IKE-0011

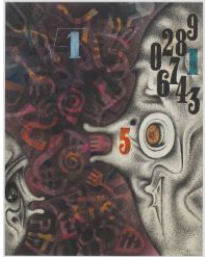


Toy World: Mosquito, 1967
Ink and watercolor on paper
16 1/8 x 12 1/2 inches
(41 x 31.9 cm)
IKE-0019

The George Economou Collection



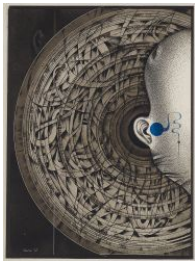
Toy World: Circuit, 1967
Conté and pastel on paper
16 x 12 5/8 inches
(40.4 x 32.1 cm)
IKE-0004
The Rachofsky Collection



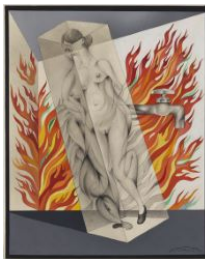
Toy World Series: Playing with Numbers, 1967
Mixed media
15 1/8 x 11 3/4 inches
(38.5 x 30 cm)
IKE-0068



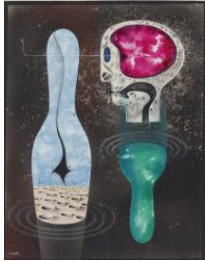
Toy World: Derabocchi, 1967
Ink and collage on paper
15 3/4 x 12 1/4 inches
39.9 x 31.2 cm
IKE-0001



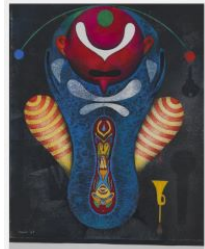
Toy World: Walkie-Talkie, 1966-67
Ink, charcoal and watercolor on paper
15 3/4 x 12 5/8 inches
(40 x 32 cm)
IKE-0018



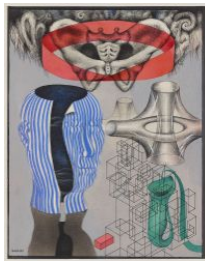
Dissection Archaeology: Morphology of Fire, 1969
Watercolor and ink on paper
16 5/8 x 13 inches
(42.3 x 33 cm)
IKE-0008



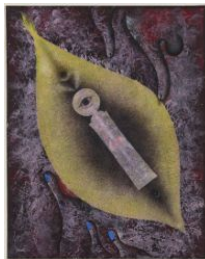
Toy World: Space Theory, or the Roaming Eyes, 1967
Conté and collage on paper
16 x 12 3/4 inches
(40.7 x 32.4 cm)
IKE-0007



A Heavy Balancing Toy, 1967
Mixed media
15 1/2 x 12 1/4 inches
(39.3 x 31 cm)
IKE-0075



Toy World: Necklace of Medusa, 1967
Ink on paper
16 1/8 x 12 3/4 inches
(41 x 32.4 cm)
IKE-0016
The George Economou Collection



Toy World: Kokeshi, 1966-67
Oil and Conté on paper
17 3/8 x 14 inches
(44.1 x 35.8 cm)
IKE-0006
The Rachofsky Collection



Dissection Archeology: A Machine, 1969
Ink and watercolor on paper
16 1/2 x 12 5/8 inches
(42 x 32 cm)
IKE-0073



Dissection Archaeology: Mandate, 1969
Oil, watercolor and ink on paper
19 3/4 x 13 5/8 inches
(50 x 34.5 cm)
IKE-0043



Dissection Archaeology, 1969
Watercolor, oil and ink on paper
20 1/2 x 15 1/8 inches
(52.2 x 38.3 cm)
IKE-0029



Dissection Archaeology, 1969
Watercolor, oil and ink on paper
20 1/16 x 14 3/8 inches
(51 x 36.5 cm)
IKE-0026



Dismantling Categories, 1969
Mixed media
18 7/8 x 13 7/8 inches
(47.8 x 35.2 cm)
IKE-0072



BRAHMAN: Chapter 1, 1974
Acrylic and pencil on paper
30 1/2 x 20 6/8 inches
(77.5 x 52.5 cm)
IKE-0012



Oval Space No. 3, 1963-64
Oil and collage on board
30 x 48 inches
(76 x 122 cm)
IKE-0002



Untitled, 1963-64
Oil and collage on plywood
30 x 48 inches
(76 x 122 cm)
IKE-0030



BRAHMAN: Chapter 3: Floating Sphere-2, 1977
Acrylic on paper
15 1/2 x 15 1/2 inches
(39.5 x 39.5 cm)
IKE-0051



BRAHMAN: Chapter 3: Floating Sphere-6, 1978
Acrylic on paper
15 1/2 x 15 1/2 inches
(39.5 x 39.5 cm)
IKE-0055



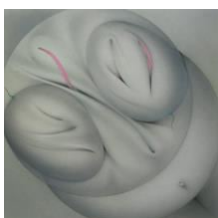
BRAHMAN: Chapter 3: Floating Sphere-7, 1978
Acrylic on paper
15 1/2 x 15 1/2 inches
(39.5 x 39.5 cm)
IKE-0056



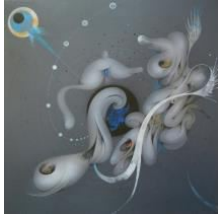
BRAHMAN: Chapter 2: Space Egg-5, 1976
Acrylic on paper
15 1/2 x 15 1/2 inches
(39.5 x 39.5 cm)
IKE-0048



BRAHMAN: Chapter 4: Helix Granular Movement-6, 1979
Acrylic on paper
15 1/2 x 15 1/2 inches
(39.5 x 39.5 cm)
IKE-0065



BRAHMAN: Chapter 2: Space Egg-2, 1976
Acrylic on paper
15 1/2 x 15 1/2 inches
(39.5 x 39.5 cm)
IKE-0045



*BRAHMAN: Chapter 4: Helix Granular
Movement-1, 1978*
Acrylic on paper
15 1/2 x 15 1/2 inches
(39.5 x 39.5 cm)
IKE-0060



*BRAHMAN: Chapter 4: Helix Granular
Movement-3, 1978*
Acrylic on paper
15 1/2 x 15 1/2 inches
(39.5 x 39.5 cm)
IKE-0062



BRAHMAN: Chapter 2: Space Egg-4, 1976
Acrylic on paper
15 1/2 x 15 1/2 inches
(39.5 x 39.5 cm)
IKE-0047



*BRAHMAN: Chapter 4: Helix Granular
Movement-4, 1979*
Acrylic on paper
15 1/2 x 15 1/2 inches
(39.5 x 39.5 cm)
IKE-0063



Untitled, 1979
Acrylic on paper
15 1/2 x 15 1/2 inches
(39.5 x 39.5 cm)
IKE-0077



Haiiro no Ganba, 1996
Mixed media
12 1/8 x 16 3/4 x 3 1/8 inches
(30.8 x 42.6 x 7.8 cm)
IKE-0081



Tasogare ni Tatsu, 1994-95
Mixed media
28 1/4 x 19 1/4 x 5 7/8 inches
(71.8 x 49 x 15 cm)
IKE-0078



Omokage, 1996
Mixed media
20 1/8 x 15 1/2 x 3 3/4 inches
(51 x 39.5 x 9.5 cm)
IKE-0080



Kita he, 1994
Mixed media
24 1/4 x 19 x 4 3/4 inches
(61.5 x 48.3 x 12 cm)
IKE-0079



BRAHMAN: Chapter 10-Field Phase 4, 1988
Watercolor and sand on paper
17 1/4 x 23 5/8 inches
(43.8 x 60.1 cm)
IKE-0013



BRAHMAN, 1987
Acrylic on paper
30 1/4 x 20 7/8 inches
(77 x 53 cm)
IKE-0031



Brahman, 1988
Mixed media
17 1/8 x 23 1/2 inches
(43.5 x 59.7 cm)
IKE-0070