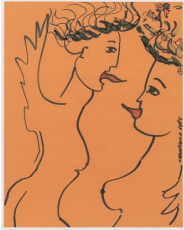


**MARCIA HAFIF, CAROL RAMA, MARIO SCHIFANO:
SELECTIONS FROM 1958-1981
June 22 - August 20, 2020
Checklist**

Counter-clockwise from entrance:



CAROL RAMA
Malelingue, 1981
Ink and acrylic on paper
23 1/4 x 18 1/8 inches
(59 x 46 cm)
RAM-0037



CAROL RAMA
I marchettoni, 1958
Ink and pigment on wallpaper, mounted on
cardboard
24 x 19 3/4 inches
(61 x 50 cm)
RAM-0007



MARIO SCHIFANO
Coca Cola, 1978
Oil on jute and wrapping paper
43 1/4 x 31 1/2 inches
(110 x 80 cm)
SCH-0013



MARCIA HAFIF
Untitled, December 1966
Acetate on paper
13 3/4 x 13 3/4 inches
(35 x 35 cm)
HAF-0071



MARCIA HAFIF
Untitled, June 1966
Acetate on cardboard
13 3/4 x 13 3/4 inches
(35 x 35 cm)
HAF-0085



MARCIA HAFIF

Untitled, July 1966
Acetate on paper
19 3/4 x 13 3/4 inches
(50 x 35 cm)
HAF-0077



MARIO SCHIFANO

Untitled, 1964
Mixed media on paper
19 x 51 1/8 inches
(48 x 130 cm)
SCH-0006

Office:



MARCIA HAFIF

Untitled, May 1966
Acetate on cardboard
13 3/4 x 19 3/4 inches
(35 x 50 cm)
HAF-0075