

**GATHERINGS**  
June 25 – July 31, 2015

**GROUND FLOOR**



**WILLIAM LAMSON**  
*A Mineral Terrain (Panel 3)*, 2015  
Tempered glass and salt  
35 5/8 x 85 1/2 inches  
90.5 x 217.2 cm  
LAMS-0004



**WILLIAM LAMSON**  
*A Mineral Terrain (Panel 2)*, 2015  
Tempered glass and salt  
35 5/8 x 85 1/2 inches  
90.5 x 217.2 cm  
LAMS-0003



**WILLIAM LAMSON**  
*A Mineral Terrain (Panel 1)*, 2015  
Tempered glass and salt  
35 5/8 x 85 1/2 inches  
90.5 x 217.2 cm  
LAMS-0002



**KATHLEEN JACOBS**  
*BOLES*, 2015  
Oil on linen  
78 x 74 inches  
198.1 x 188 cm  
JAC-0014



**NOBUO SEKINE**  
*Untitled*, 1971  
Stone and stainless steel  
Part 1: 18 7/8 x 7 7/8 x 7 7/8 inches / 48 x 20 x 20 cm  
Part 2: 17 x 6 x 5 1/8 inches / 43 x 15 x 13 cm  
SEK-0001



**BRENDAN EARLEY**

*Night Work*, 2015

Pencil and collage on paper

11 3/4 x 7 3/4 inches

29.7 x 19.7 cm

EARL-0004



**BRENDAN EARLEY**

*I Waited...*, 2015

Pencil on paper

11 3/4 x 7 3/4 inches

29.7 x 19.7 cm

EARL-0003



**BRENDAN EARLEY**

*Till it gets Dark*, 2015

Pencil and collage on paper

11 3/4 x 7 3/4 inches

29.7 x 19.7 cm

EARL-0005



**KASPER SONNE**

*TXC112*, 2015

Industrial paint and chemicals on linen, in aluminum frame

72 x 60 inches

182.9 x 152.4 cm

SON-0002



**JAMES CASE-LEAL**

*Black Rainbow XXXIII (magical thinking)*, 2015

Wood, aluminum, cotton, PVA, pigment: carbon, money ash, hanza

10G, disazo H10GL, quinacridone magenta, stolen IKB, perylene

carmine, dioxazine violet, verdigris, sulfur

87 1/2 x 75 inches / 222.3 x 190.5 cm

CAS-0002



**KATHLEEN JACOBS**

*HIDAL 1*, 2014

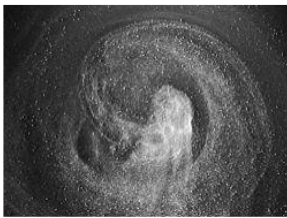
Oil on linen  
30 x 30 inches  
76.2 x 76.2 cm  
JAC-0001



**KATHLEEN JACOBS**

*HIDAL 2*, 2014

Oil on linen  
30 x 30 inches  
76.2 x 76.2 cm  
JAC-0002



**BRIAN FRIDGE**

*Vault Sequence No. 1*, 2000

Black & white video, silent  
6 minutes  
Edition AP  
FRID-0001



**KATHLEEN JACOBS**

*Untitled*, 2012

Salt-fired porcelain  
6 sculptures, dimensions vary  
JAC-0017 through JAC-0022



**WILLIAM LAMSON**

*Bowl (6b), Bowl (1a), Bowl (7a), Bowl (3a), Bowl (4a)*, 2015

Hand blown glass and salt  
Dimensions vary



LAMS-0017, -0006, -0018, -0010, -0012

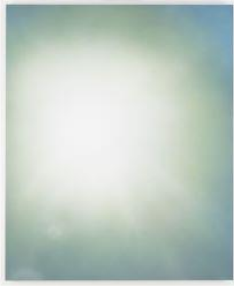


**WILLIAM LAMSON**

*Untitled (Walden)*, 2014

4k to 1080P video  
18 minutes, 31 seconds  
Edition 2 of 5  
LAMS-0001

## SECOND FLOOR



### JAMES CASE-LEAL

*Sixth Sun 4e*, 2015

Wood, Belgian linen, PVA, pigment: carbon, money ash, hanza 10G, naphthol, stolen ikb, quinacridone magenta, dioxazine violet, zinc, sulfur

74 x 61 inches / 188 x 154.9 cm

CAS-0001



### BRENDAN EARLEY

*Here Comes the Sun*, 2015

Pencil and marker on paper, carved oak stick

Framed work: 11 3/4 x 7 3/4 inches / 29.7 x 19.7 cm

Carved Oak: 53 3/4 x 5/8 x 5/8 inches / 136.5 x 1.7 x 1.7 cm

EARL-0002



### JAMES CASE-LEAL

*Black Rainbow XXII (a positive mind)*, 2015

Wood, Belgian linen, PVA, pigment: pigment: carbon, money ash, hanza 10G, disazo H10GL, quinacridone magenta, stolen IKB, perylene carmine, dioxazine violet, verdigris, sulfur

74 x 61 inches / 188 x 154.9 cm

CAS-0003



### KASPER SONNE

*Untitled (Vulcan)*, 2015

Volcanic rock

15 x 16 x 16 inches

38.1 x 40.6 x 40.6 cm

SON-0001



### KATHLEEN JACOBS

*NAILR*, 2015

Oil on linen

83 x 83 inches

210.8 x 210.8 cm

JAC-0013



**WILLIAM LAMSON**

*Bowl (7b), Bowl (5b), Bowl (6a), Bowl (1a), Bowl (3b), 2015*  
Hand blown glass and salt  
Dimensions vary  
LAMS-0019, -0015, -0016, -0007, -0011



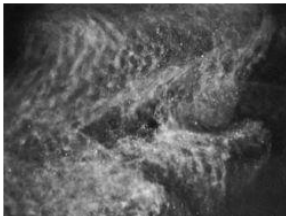
**KASPER SONNE**

*BAD18, 2015*  
Volcanic ash exfoliator, water and UV protection on linen,  
in aluminum frame  
72 x 60 inches  
182.9 x 152.4 cm  
SON-0003



**BRIAN FRIDGE**

*Vault Sequence No. 10, 2002*  
Black & white video, silent  
4 minutes  
Edition 2 of 5  
FRID-0003



**BRIAN FRIDGE**

*Vault Sequence No. 6 - 7, 1999-2002*  
Black & white video, silent  
2 minutes, 30 seconds  
Edition 2 of 3  
FRID-0002



**NOBUO SEKINE**

*Untitled, 1971*  
Stone and stainless steel  
Part 1: 17 3/4 x 7 x 7 inches / 45 x 18 x 18 cm  
Part 2: 16 1/8 x 7 x 3 1/2 inches / 41 x 18 x 9 cm  
SEK-0002