

ART BASEL 2021
September 23 - 26, 2021



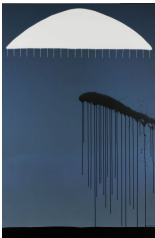
SHIGEKO KUBOTA

Duchampiana: Bicycle Wheel One, Two, and Three,
 1983

Bicycle wheels mounted on wooden stools with
 motors, six, three inch liquid crystal monitors,
 single-channel video (color, sound)

Three figures, each: 58 x 25 x 15 inches
 (147.3 x 63.5 x 38.1 cm)

KUB-0003



SADAMASA MOTONAGA

White Triangle and Black Flows, 2006

Acrylic on canvas

76 3/8 x 51 1/8 inches

(194 x 130 cm)

MOT-0026



MARCIA HAFIF

128., September 1966

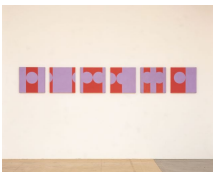
Acrylic on canvas

(white, overseas blue, real purple/dark cadmium
 yellow, clear, medium, white)

78 3/4 x 67 inches

(200 x 170 cm)

HAF-0168



MARCIA HAFIF

58., 59., 60., 61., 62., 63., (Mirror, Mirror I-VI),

November 1964

Acrylic on canvas

(parma violet, white/satellite red)

Suite of 6, each: 19 3/4 x 19 3/4 inches

(50 x 50 cm)

HAF-0158--HAF-0163



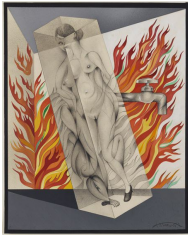
KAZUO SHIRAGA
Komai, 1988
Oil on canvas
20 3/4 x 17 7/8 inches
(52.7 x 45.4 cm)
SHI-0051



BARRY X BALL
Sick Child, 2013-2020
Translucent pink Iranian onyx
133.1 x 84 x 84 cm
Overall: 63 1/4 x 33 x 33 inches
(160.8 x 84 x 84 cm)
BALL-0036



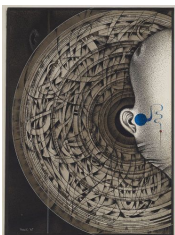
BARRY X BALL
Flesh of Others, 2013-2020
Translucent "wounded" Mexican onyx
Overall: 61 7/8 x 33 x 33 inches
(157.3 x 84 x 84 cm)
BALL-0037



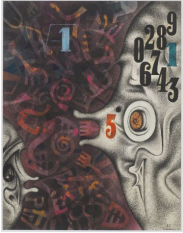
TATSUO IKEDA
Dissection Archaeology: Morphology of Fire, 1969
Watercolor and ink on paper
16 5/8 x 13 inches
(42.3 x 33 cm)
IKE-0008



TATSUO IKEDA
Toy World, 1967
Watercolor and ink on paper
15 3/4 x 12 1/2 inches
(39.9 x 31.9 cm)
IKE-0011



TATSUO IKEDA
Toy World: Walkie-Talkie, 1966-67
Ink, charcoal and watercolor on paper
15 3/4 x 12 5/8 inches
(40 x 32 cm)
IKE-0018



TATSUO IKEDA

Toy World Series: Playing with Numbers, 1967

Mixed media

15 1/8 x 11 3/4 inches

(38.5 x 30 cm)

IKE-0068



TATSUO IKEDA

Dissection Archaeology, 1969

Watercolor, oil and ink on paper

20 1/16 x 14 3/8 inches

(51 x 36.5 cm)

IKE-0026



TOSHIO YOSHIDA

Untitled, 1962

Oil, papier-mâché, resin, and wire mesh on cotton

45 3/4 x 35 1/8 inches (116.2 x 89.3 cm)

Framed: 53 x 42 1/2 inches (134.6 x 108 cm)

YOS-0091



TOSHIO YOSHIDA

Sakuhin (54-28), 1954

Burnt wood

17 3/4 x 17 3/4 inches

(45 x 45 cm)

YOS-0026



TOSHIO YOSHIDA

Untitled, 1962

Oil, papier-mâché, and resin on board

35 7/8 x 28 3/4 inches (91.2 x 73.2 cm)

Framed: 43 x 36 inches (109.2 x 91.4 cm)

YOS-0090



TOSHIO YOSHIDA

Untitled, 1961

Oil and papier-mâché on board

36 x 36 inches (91.3 x 91.4 cm)

Framed: 42 1/2 x 42 1/2 inches (108 x 108 cm)

YOS-0093



RICHARD NONAS

Untitled, 1972

Butcher paper and carpenter's glue in wood box

11 3/4 x 9 3/4 x 2 inches

(29.8 x 24.8 x 5.1 cm)

NON-0030



RICHARD NONAS

Genoa Slot Series (2 Up), 1974

Steel

1 3/8 x 39 5/8 x 3 inches

(3.5 x 100.6 x 7.6 cm)

NON-0365



RICHARD NONAS

Genoa Slot Series (2 Down 2 Up), 1974

Steel

2 1/8 x 39 1/8 x 3 inches

(5.4 x 99.4 x 7.6 cm)

NON-0364



RICHARD NONAS

Southern Boundry, Bari, 1975

Steel

3 x 181 1/8 x 1 3/8 inches

(7.6 x 460.1 x 3.5 cm)

NON-0351