

**In Light of Shade**  
**February 27 - April 19, 2019**



**RACHELLE DANG**

*Seedling Carrier Both Tomb and Womb,*  
 2019

Aluminum, wood, paint,  
 paper clay, epoxy clay, wire  
 57 x 84 x 36 inches (152 x 213 x 91 cm)  
 DAN-0001



**MARCIA HAFIF**

*Shade Paintings: Group 9 (Neutral Tint,  
 Payne's Grey, Davy's Grey, Olive Green),*  
 2014

Acrylic on canvas  
 4 parts, each: 18 x 18 inches (45 x 45 cm)  
 HAF-0002



**MEREDYTH SPARKS**

*Extraction (Slits/Orange and Green Stripes),*  
 2018

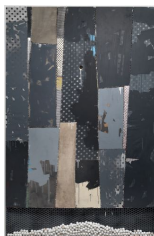
Digital print on canvas, fabric, vinyl LP  
 77 1/2 x 52 inches (196 x 132.1 cm)  
 SPAR-0002



**MEREDYTH SPARKS**

*Extraction (Mauve Grid/Dresser Redux),*  
 2018

Altered digital print on canvas, thread  
 57 3/4 x 57 3/4 inches (146 x 146 cm)  
 SPAR-0001



**SALLY ROSS**

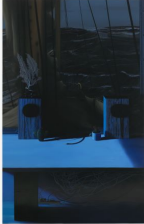
*Ball Drop, Dropped Balls,* 2019

Gesso, enamel, flashe, and spray paint on  
 canvas and printed fabric, with chicken wire  
 and cork balls  
 137 x 88 inches (348 x 223.5 cm)  
 ROS-0014



**KATHLEEN JACOBS**

*PITAS*, 2016  
Oil on linen  
72 x 76 inches (182.9 x 193 cm)  
JAC-0028



**ANNA CONWAY**

*Steady As She Goes*, 2018  
Oil on panel  
70 x 45 inches (177.8 x 114.3 cm)  
CON-0011

Exhibition Only



**KATHLEEN JACOBS**

*FUZZY*, 2017  
Oil on linen  
72 x 76 inches (182.9 x 193 cm)  
JAC-0055



**ANNA CONWAY**

*Alexa, Siri, Landscape*, 2018  
Oil on panel  
30 x 24 1/4 inches (76.2 x 61.6 cm)  
CON-0012



**ANNA CONWAY**

*Competition*, 2018  
Oil on panel  
36 1/4 x 24 inches  
(92.1 x 61 cm)  
CON-0013

Exhibition Only



**MARTHA JUNGWIRTH**

*Untitled (from the series 'Fundraising')*,  
2014  
Oil on paper, mounted on canvas  
55 1/8 x 68 7/8 inches (140 x 175 cm)  
JUN-0002