

Sadamasa Motonaga & Natsuyuki Nakanishi:
Counterpoints of the Japanese Avant-Garde
 April 1 – May 15, 2021



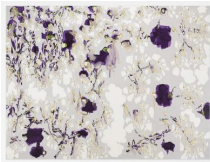
SADAMASA MOTONAGA
Big Square of Gray, 1981
 Acrylic on canvas
 89 3/8 x 71 1/4 inches
 (227 x 181 cm)
 MOT-0045



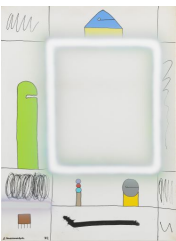
NATSUYUKI NAKANISHI
Middle - Swift White XII, 1990
 Oil on canvas
 74 3/4 x 89 1/2 inches
 (190 x 227.3 cm)
 NAK-0131



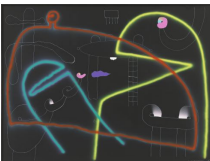
SADAMASA MOTONAGA
From Black Lines, 1981
 Acrylic on canvas
 51 1/8 x 63 3/4 inches
 (130 x 162 cm)
 MOT-0141



NATSUYUKI NAKANISHI
G/Z Hoho, 1993
 Oil and charcoal on canvas
 76 1/2 x 102 inches
 (194.3 x 259.1 cm)
 NAK-0003



SADAMASA MOTONAGA
From Square of White Lines, 1982
 Oil and acrylic on canvas
 51 1/8 x 38 1/8 inches
 (130 x 97 cm)
 MOT-0138



SADAMASA MOTONAGA
From Three Color Lines, 1978
 Acrylic and oil paint on canvas
 38 1/4 x 51 3/8 inches
 (97 x 130.5 cm)
 MOT-0143