

International



NEW YORK

Murder in Mexico

An exhibition of work by Brian Maguire to include 14 large paintings completed between 2012 and 2014 that address the Mexican drug war will show at the **Fergus McCaffrey Gallery**. 'Blood Rising', a film co-produced by Maguire and Mark McLoughlin will also be shown. This film details Maguire's portraiture and activism in response to the murder of 1,400 young women in the city of Juárez since 1994. Maguire's works confound tradition by using the authority of the genre to bring dignity to the overlooked and marginalized. **Fergus McCaffrey: until 25 April**

6 BRIAN MAGUIRE AT FERGUS MCCAFFREY GALLERY

7 LISA O'DONNELL AT IRISH ART CENTRE

8 CORMAC O'LEARY AT BARBARA STANLEY GALLERY

9 EAMON O'KANE AT LA MAMA GALLERIA

10 WILLIAM ORPEN AT NORWICH CASTLE MUSEUM & ART GALLERY



NEW YORK

Trasatlantacha

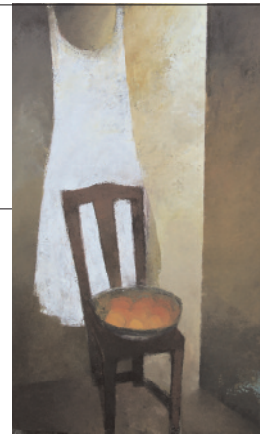
The **Irish Arts Centre** hosts 'Trasatlantacha' bringing together two artists from both sides of the Atlantic. Galway-born Lisa O'Donnell and native New Yorker Maeve D'Arcy explore their combined interests and experiences of Irish immigration and diaspora, approaching the subject from two different artistic perspectives and geographical locations. Associated histories, memories and experiences connect their separate visual art practices into a figurative and abstract collaboration of paintings, drawings and maps. **D'Arcy and O'Donnell: April**



NORWICH

Homage to Manet

'Homage to Manet' opening at **Norwich Castle Museum & Art Gallery** explores the controversial artist Edouard Manet's influence on British Impressionism and the depiction of women in early 20th century art. The central theme of the exhibition is how Manet influenced the way future generations of artists depicted women in art. The exhibition takes its title from Irish artist William Orpen's painting *Homage to Manet* which has been loaned by Manchester City Galleries. Other artists included are Claude Monet, John Singer Sargent, Philip Wilson Steer, Walter Sickert, Gwen John, Laura Knight, Alfred Munnings and Vanessa Bell. **Homage to Manet: until 19 April**



LONDON

Narratives

A solo exhibition of work by Cork-born Cormac O'Leary will show in the **Barbara Stanley Gallery**. Predominantly a landscape painter, O'Leary is concerned with place and narrative, returning to landscapes over time to pick up the thread of a visual story. Many of his works are concerned with the natural renewal of the landscape: a shelf of rock by a thundering sea, beaches in winter light, fields overshadowed by mountains, and forests in seasonal flux.

Cormac O'Leary: 15 - 30 April

NEW YORK

Begin and end

La MaMa Galleria presents 'to begin, to end', a new installation by Eamon O'Kane. Through a series of specific personal meditations, the artist explores universal themes including humankind's fragile relationship with and dependence on nature and the importance of cultural history in understanding the past, present and future. This new work will include drawings of artefacts from National Museums of Ireland collections and references to writers such as WB Yeats, Samuel Beckett and Flann O'Brien. The works will also depict views of a disused plant nursery, the home of the artist since 2009. **Eamon O'Kane: 9 April - 9 May**

